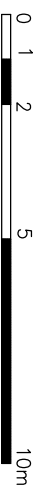
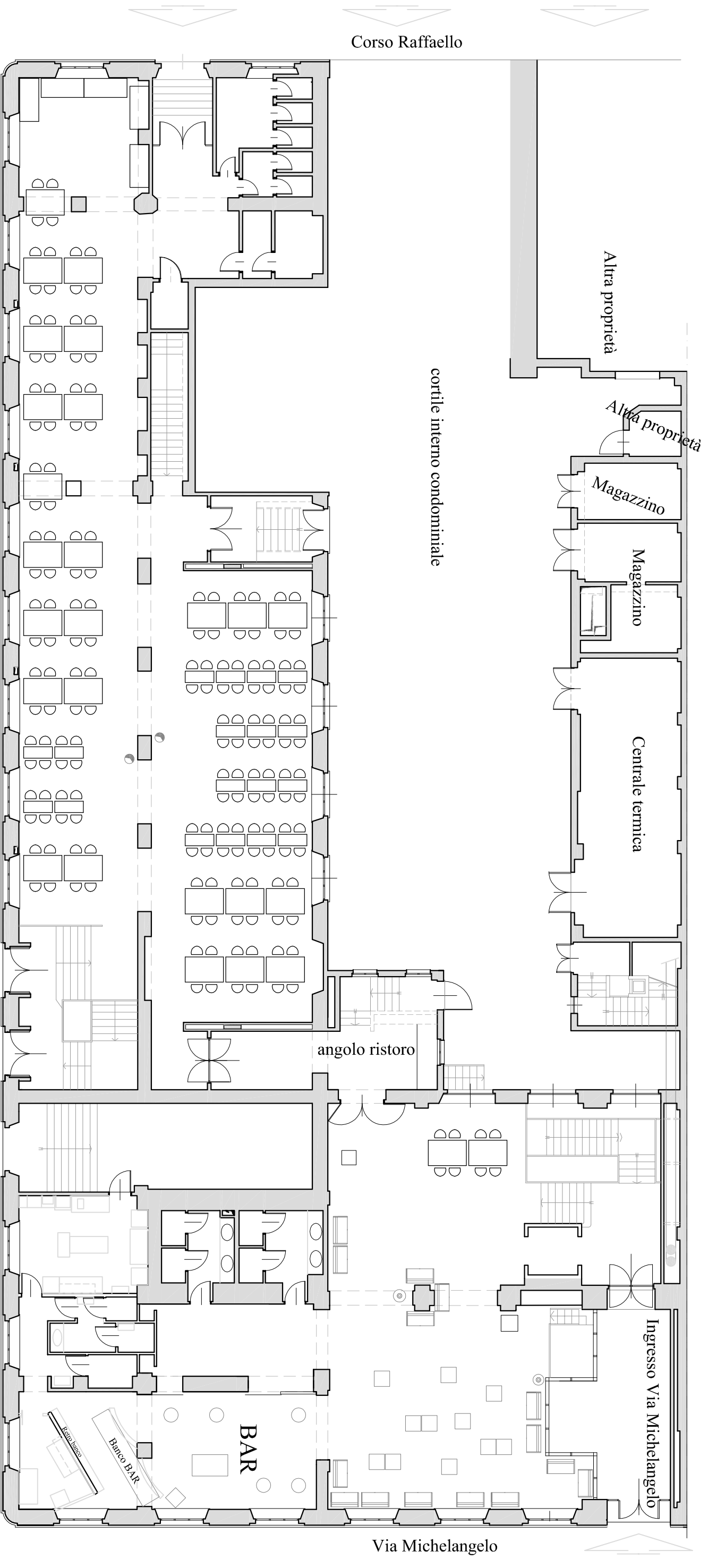


# SALA STUDIO MICHELANGELO

— Superficie lorda.....	1126,91 mq
— Superficie netta alle stufie.....	329,40 mq
— Superficie netta bar.....	264,40 mq
— Superficie netta servizi igienici.....	41,0 mq
— Superficie netta locali tecnici.....	48,20 mq
n° tavoli.....	47
n° posti per tavolo.....	4
TOT posti a sedere.....	188



PIANTA PIANO RIALZATO

Sala Studio Michelangelo 1/2 Agg.28/10/2011